

William A. Flint, III
Landscape Architect
2310 S.E. COUNTRY CLUB LANE
Stuart, Florida 34996
772-220-0424
Reg. # 941

GENERAL NOTES:

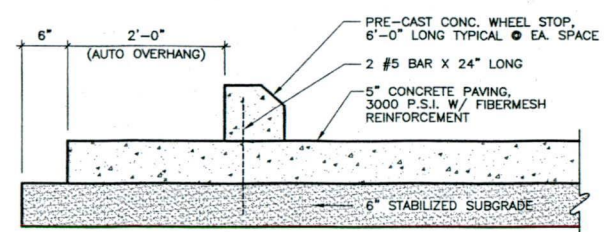
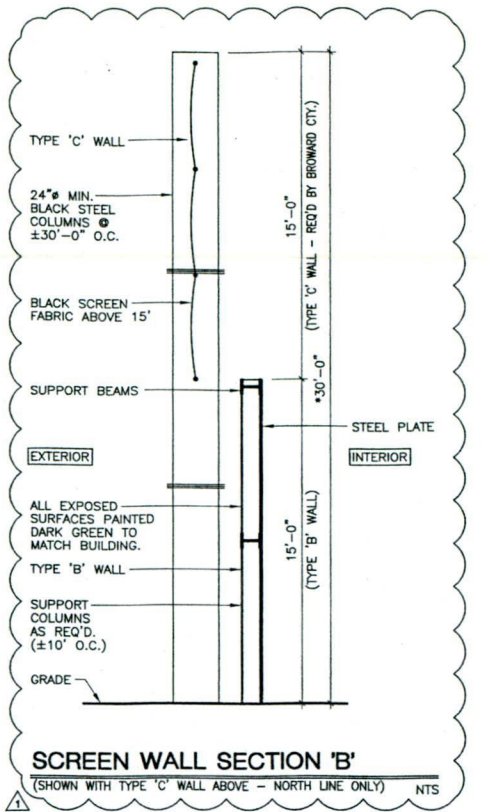
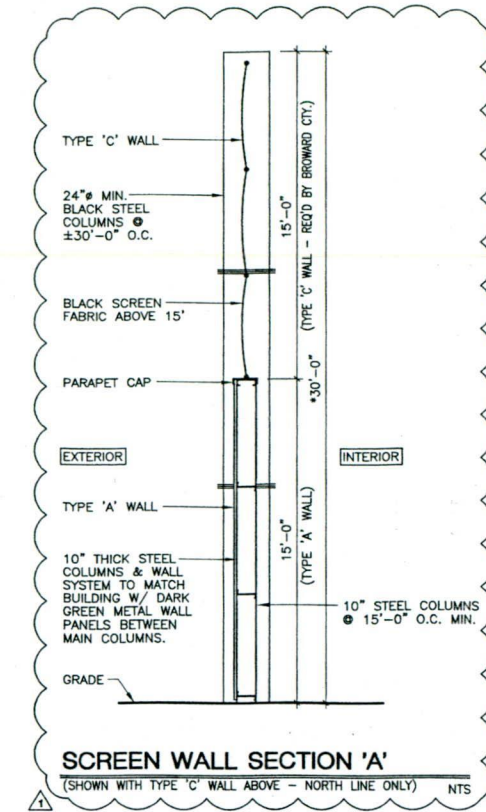
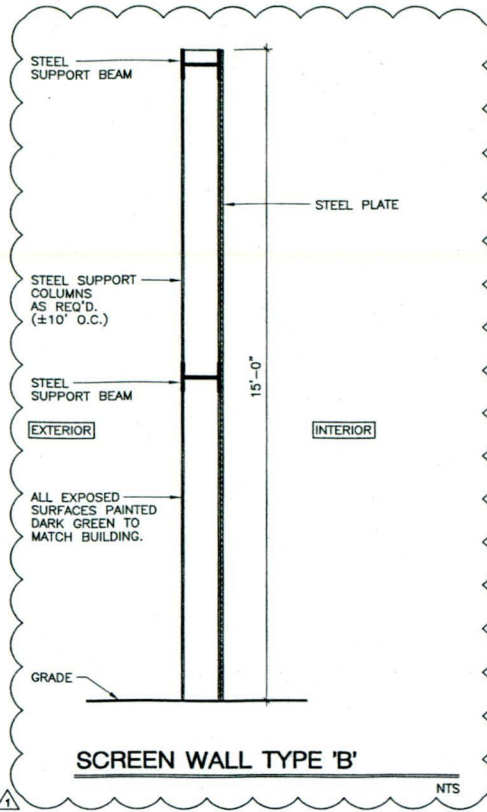
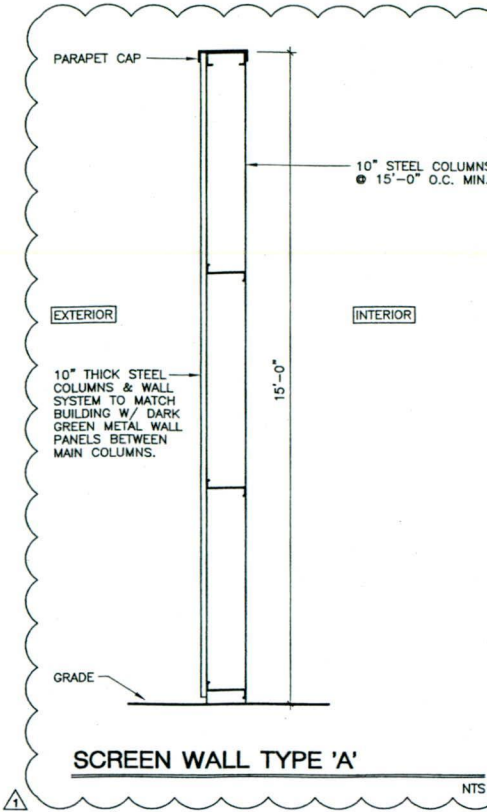
1. ALL WORK SHALL BE ACCOMPLISHED IN ACCORDANCE WITH CITY OF POMPAHO BEACH, FL STANDARDS AND SPECIFICATIONS.
2. ALL DISTURBED AREAS NOT COVERED BY CONSTRUCTION SHALL BE SEEDED AND MULCHED WITH GRASS SUITABLE FOR THE LOCALITY.
3. BOUNDARY DATA PROVIDED FROM A SURVEY PRODUCED BY PINNELL SURVEY, INC. UPDATED 3/26/10, 4855 WEST HILLSBORO BLVD., SUITE B-1, COCONUT CREEK, FL 33073. PH. (954) 418-4940.
4. THE CONTRACTOR SHALL BE SOLELY RESPONSIBLE FOR THE LOCATION OF EXISTING UTILITIES AND SHALL EXERCISE EXTREME CAUTION WHILE WORKING IN AREAS NEAR EXISTING AND NEW ON-SITE/OFF-SITE STRUCTURES AND UTILITIES. THE CONTRACTOR SHALL REPAIR OR PAY FOR ALL DAMAGES MADE TO EXISTING OR NEW STRUCTURES AND/OR UTILITIES.
5. SITE CONSTRUCTION SHALL BE CERTIFIED BY THE ENGINEER-OF-RECORD WITH APPROPRIATE CONSTRUCTION COMPLETION DOCUMENTATION.
6. DO NOT SCALE DRAWINGS. ALL DIMENSIONS SUPERSEDE ANY GRAPHIC REPRESENTATION.
7. THE GENERAL CONTRACTOR SHALL VERIFY ALL DIMENSIONS, DRAWINGS AND SPECIFICATIONS REQUIREMENTS WITH EXISTING CONDITIONS IN THE FIELD AND BRING ANY DISCREPANCIES TO THE ARCHITECT'S ATTENTION BEFORE PROCEEDING WITH THE WORK.
8. THIS SYMBOL IS NOT A PAVEMENT MARKING, BUT SIMPLY INDICATES DIRECTION OF TRAVEL.

AHRENS COMPANIES
DESIGN/BUILD - GENERAL CONSTRUCTION
OFFICE: (561) 863-9004 LICENSE: #08008515 #A26000694
1461 KINETIC ROAD, LAKE PARK, FL 33403-1911

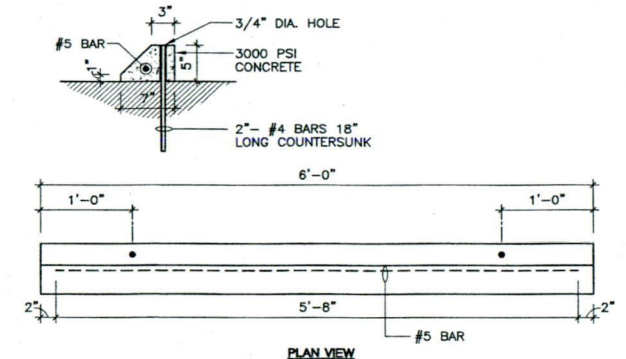
PROPOSED SITE PLAN & ROOF SHELTER
SUN RECYCLING 2
2281 N.W. 16TH STREET
POMPAHO BEACH, FLORIDA

WILLIAM A. FLINT, III
LANDSCAPE ARCHITECT
FLORIDA REGISTRATION # 941
DATE:

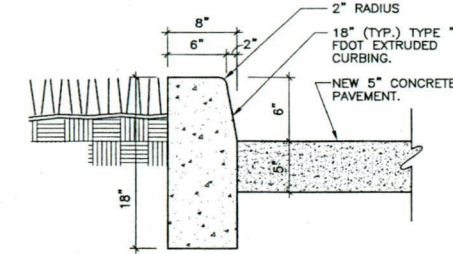
DATE: 03-31-10
SCALE: AS SHOWN
DRAWN: RES
JOB: 100-16
SHEET: 2
SP-2



WHEEL STOP DETAIL
N.T.S.



CONC. WHEEL STOP DETAIL
N.T.S.

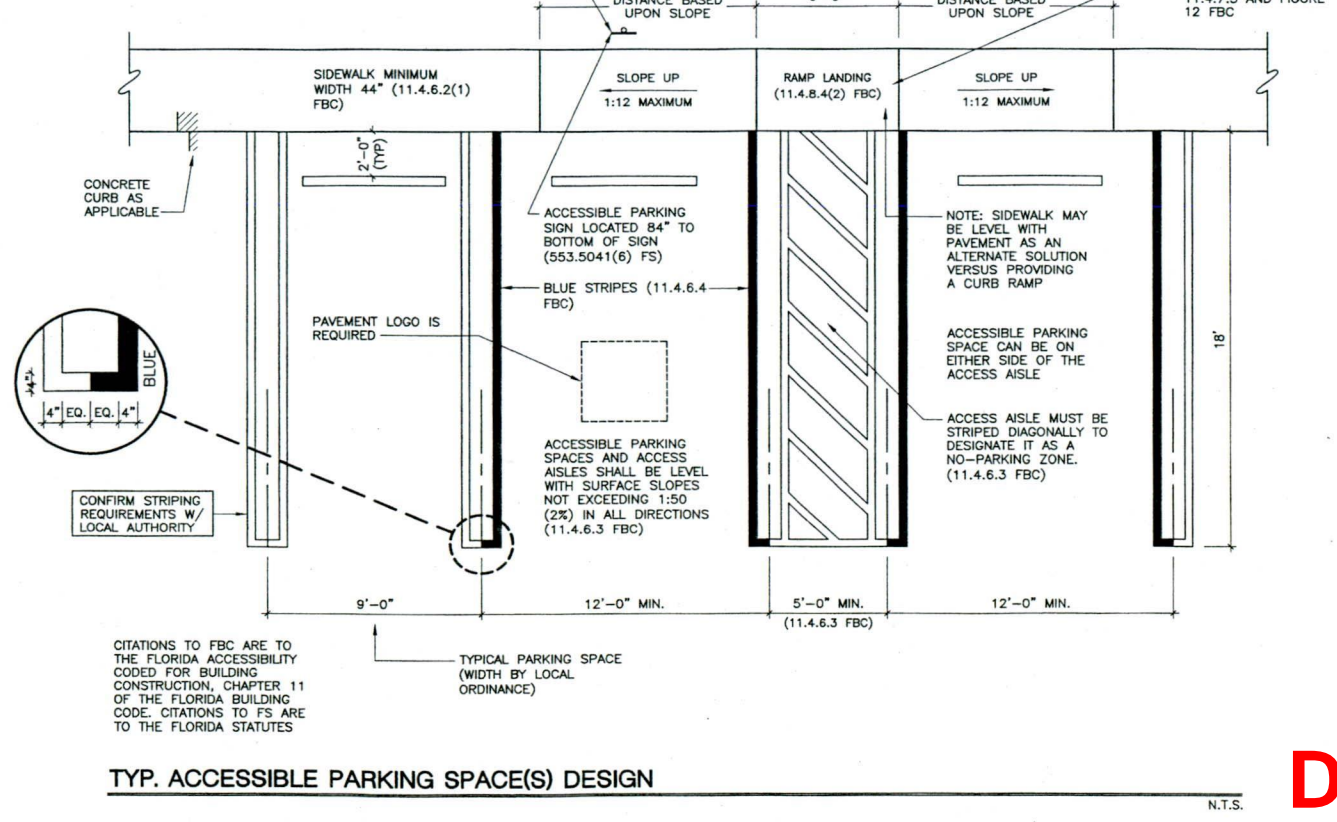


TYPE 'D' CURB DETAIL (TYP. FDOT TYPE "D")
N.T.S.

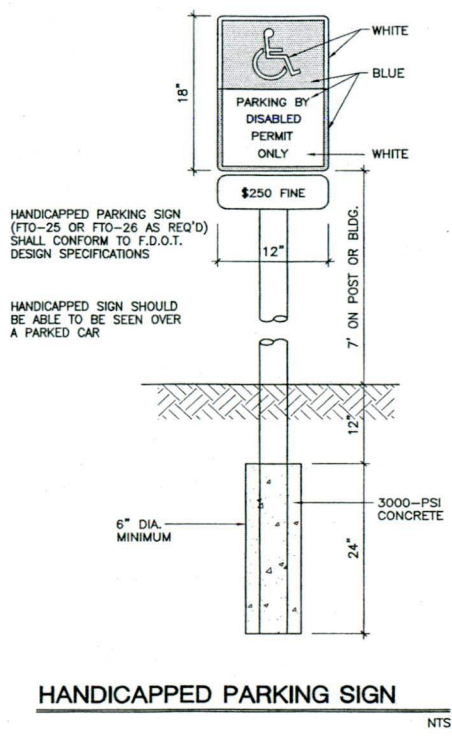
NOTE:
EACH SUCH PARKING SPACE MUST BE PROMINENTLY OUTLINED WITH BLUE PAINT, AND MUST BE REPAINTED WHEN NECESSARY, TO BE CLEARLY DISTINGUISHABLE AS A PARKING SPACE DESIGNATED FOR PERSONS WHO HAVE DISABILITIES AND MUST BE POSTED WITH A PERMANENT ABOVE-GRADE SIGN OF A COLOR AND DESIGN APPROVED BY THE DEPARTMENT OF TRANSPORTATION, WHICH IS PLACED ON OR AT A DISTANCE OF 84 INCHES ABOVE THE GROUND TO THE BOTTOM OF THE SIGN AND WHICH BEARS THE INTERNATIONAL SYMBOL OF ACCESSIBILITY MEETING THE REQUIREMENTS OF ADAAG S. 4.30.7 AND THE CAPTION "PARKING BY DISABLED PERMIT ONLY." SUCH A SIGN ERECTED AFTER OCTOBER 1, 1996, MUST INDICATE THE PENALTY FOR ILLEGAL USE OF THE SPACE. ANY PROVISION OF THIS SECTION TO THE CONTRARY NOTWITHSTANDING, IN A THEME PARK OR AN ENTERTAINMENT COMPLEX AS DEFINED IN S. 509.013 (9) IN WHICH ACCESSIBLE PARKING IS LOCATED IN DESIGNATED LOTS OR AREAS THE SIGNAGE INDICATION THE LOT AS RESERVED FOR ACCESSIBLE PARKING MAY BE LOCATED AT THE ENTRANCES TO THE LOT IN LIEU OF A SIGN AT EACH PARKING PLACE. THIS SUBSECTION DOES NOT RELIEVE THE OWNER OF THE RESPONSIBILITY OF COMPLYING WITH THE SIGNAGE REQUIREMENTS OF ADAAG S. 4.30.

ALL SPACES MUST BE LOCATED ON AN ACCESSIBLE ROUTE NO LESS THAN 44" WIDE SO THAT USERS WILL NOT BE COMPELLED TO WALK OR WHEEL BEHIND PARKED VEHICLES. (11.4.6.2(1) FBC) [SEE 553.5041(5)(g)(1) FS RELATED TO EXISTING PARKING AREAS]

SIGNAGE TO BEAR THE INTERNATIONAL SYMBOL OF ACCESSIBILITY PER 11.4.30.7 FBC AND THE CAPTION "PARKING BY DISABLED PERMIT ONLY." SIGNS ERECTED AFTER 10/01/96 MUST INDICATE THE PENALTY FOR ILLEGAL USE OF THE SPACE (11.4.6.4 FBC)



TYP. ACCESSIBLE PARKING SPACE(S) DESIGN
N.T.S.



HANDICAPPED PARKING SIGN
N.T.S.

DRC